

### MTC21200 Series (Horizontal type)

#### Features :

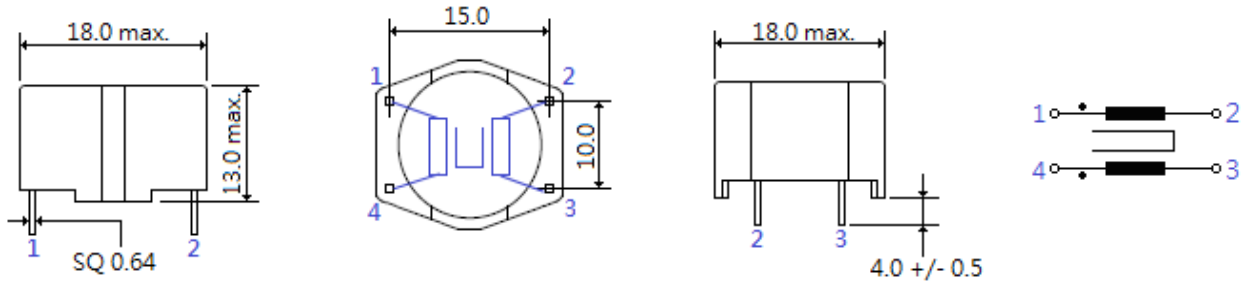
- High safety and reliability.
- Operating temperature range of -25°C to +100°C.
- Excellent frequency characteristic.
- Ferrite core material.
- Compact size, Light weight.



#### Applications :

- DC-DC converter , Car recharger , Switch-mode power supply
- EMI / EMC Suppressor , TV , Monitor

#### Shapes And Dimensions : (Unit :mm)



#### Standard electrical specifications :

Part Number Vertical type	Inductance (L) Per winding	RDC ( mΩ) Per winding (typ.)	Rated Current (max.) ( A )	Hi-Pot : W1 to W2 ( V )
MTC21250-S	400uH	60	2.6	1500
MTC21250	400uH	15	3.6	1500
MTC21251	820uH	36	2.6	1500
MTC21252	1.0mH	62	2.0	1500
MTC21252-S	1.0mH	50	3.0	1500
MTC21253	1.5mH	90	1.5	1500
MTC21254	2.7mH	151	1.5	1500
MTC21254-S	2.7mH	100	2.5	1500
MTC21255-S	3.3mH	100	1.5	1500
MTC21255	3.3mH	170	1.5	1500
MTC21256-S	3.9mH	160	2	1500
MTC21256	3.9mH	230	1.3	1500
MTC21257	4.7mH	258	1.2	1500
MTC21258	5.6mH	276	1.2	1500
MTC21259-01	6.8mH	280	1.2	1500
MTC21259	6.8mH	380	1.0	1500
MTC21260	10mH	547	0.7	1500
MTC21260-01	10mH	250	0.7	1500
MTC21261-S	18mH	940	0.5	1500
MTC21261	15mH	670	0.6	1500
MTC21262	27mH	1150	0.4	1500
MTC21262-01	27mH	750	0.5	1500
MTC21263	33mH	1350	0.4	1500
MTC21264	39mH	1550	0.4	1500
MTC21264-01	39mH	2000	0.4	1500
MTC21265	47mH	1560	0.4	1500
MTC21266	56mH	2450	0.3	1500
MTC21267	68mH	2650	0.3	1500
MTC21268	82mH	3000	0.25	1500

- Rated Inductance: measured at 25°C and F @ 10KHz 50mV
- Tolerance: + 50 - 30%
- DC resistance: at 25°C
- Testing voltage: 1500V, 50Hz, 2 sec, (winding - winding)
- Over temperature of winding: < 55°C
- Operating temperature range: - 40°C ~ +100°C
- MTCxxxx-xx-A , Pin out : A or B for vertical type. (Remove no used pin)

\*\*Customer's specifications are available\*\*

